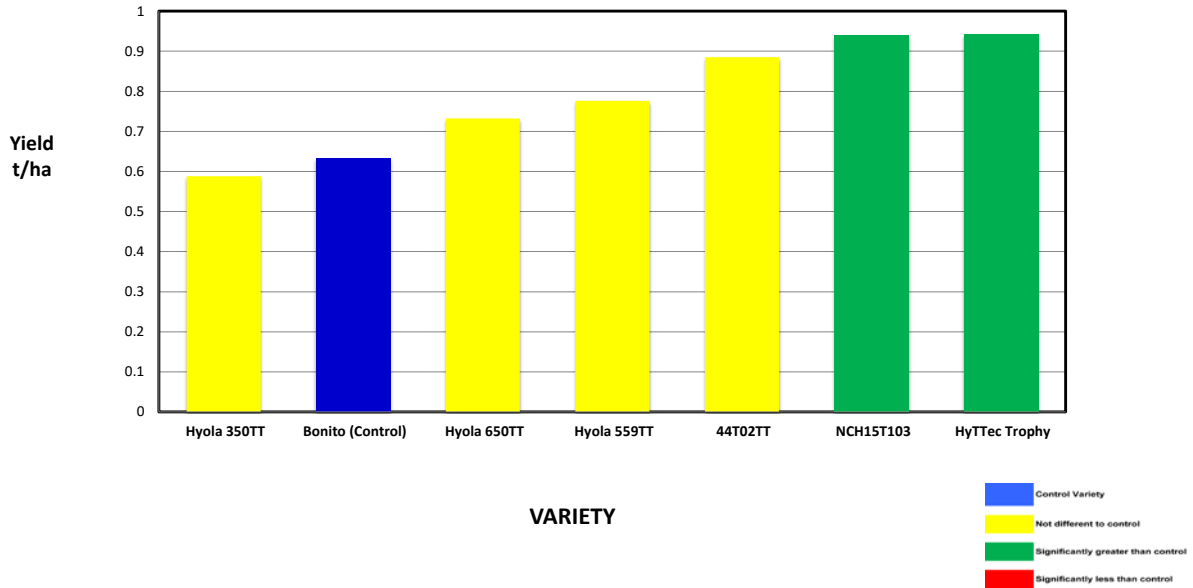


2018 SEPWA Canola Variety Trial Triazine Tolerant Hassad, Beaumont



Variety	Triat	Maturity	Yield (t/ha)	% of Bonito	Protein %	Oil %
Hyola 350TT	Triazine, Hybrid	Early	0.588	93%	26.6	44.7
Bonito (Control)	Triazine, Open	Early - Early Mid	0.633	100%	25.5	44.5
Hyola 650TT	Triazine, Hybrid	Mid- long season	0.732	116%	24.9	44.3
Hyola 559TT	Triazine, Hybrid	Mid - Mid Early	0.776	123%	26.5	43.9
44T02TT	Triazine, Hybrid	Early - Mid	0.885	140%	25.6	43.3
NCH15T103	Triazine, Hybrid	Early - Mid	0.939	148%	21.3	46.0
HyTTec Trophy	Triazine, Hybrid	Early - Mid	0.942	149%	23.2	43.5

Yield, Protein and Oil adjusted for moisture - average moisture 6.2%

Site Mean (t/ha) 0.739
Probability 0.085
Least significant difference 5% 0.258
CV % 6.8

Site Details

Soil Description: Sandy Loam
Date Sown: Thursday, 19 April 2018
Harvest Date Wednesday, 28 November 2018
Seeding Rate: 3.0 kg/ha

Plot Dimensions

Length (m) 200
Width (m) 12
Plot Area (ha) 0.24
Conversion Factor 4.17

Rainfall Data

Growing Season (mm) 299.3
Site Yield (t/ha) 0.739
kg/mm - Rainfall 2.5

RAINFALL 2018 (mm)	January	1.2	
	February	86.6	
	March	22.1	
	April	7	7
	May	19	26
	June	29.3	55.3
	July	30.9	86.2
	August	120.4	206.6
	September	34.4	241
	October	58.3	299.3
	Total	409.2	

Cumulative Growing Season Rainfall

Station: Sparkle Hill



PLATINUM SPONSORS

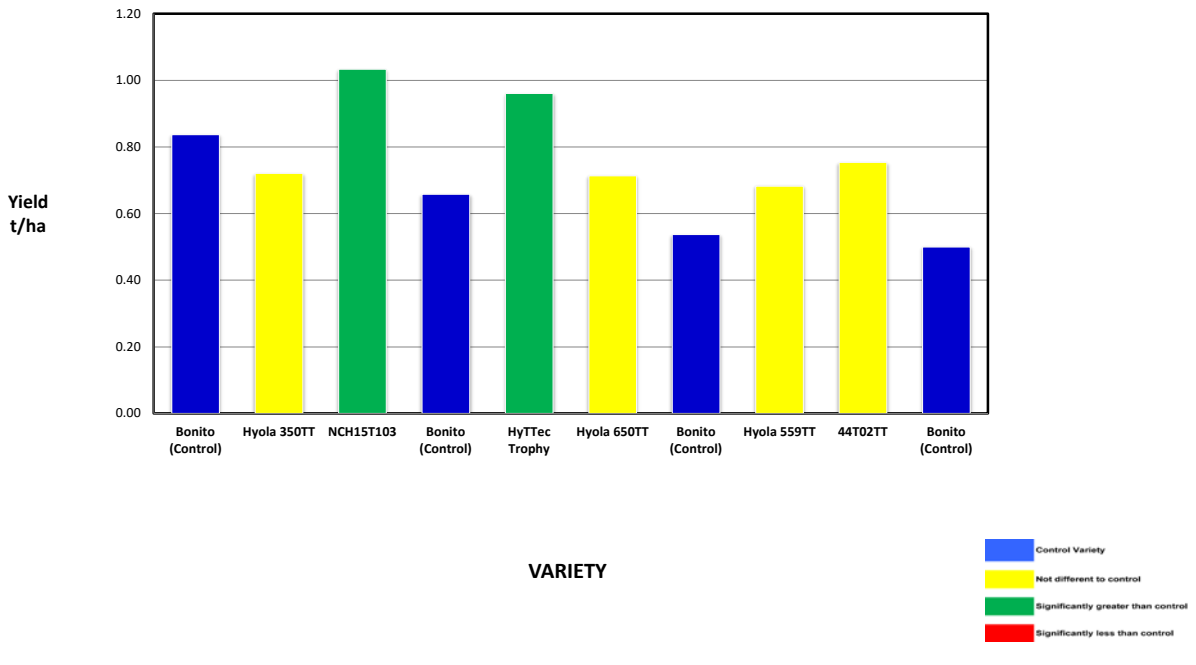


DIAMOND SPONSORS



Seed Company Sponsors: AGT, Intergrain, Nuseed, SeedNet, DuPont Pioneer, Bayer

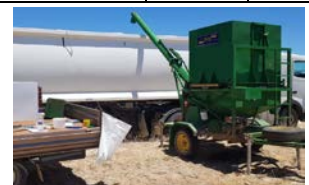
**2018 SEPWA Canola Variety Trial
 Triazine Tolerant
 Hassad, Beaumont**



Plot	Variety	Triat	Maturity	Yield (t/ha) <i>(adj moisture)</i>	% of Site Mean	Protein %	Oil %
1	Bonito (Control)	Triazine, Open	Early - Early Mid	0.84	113%	25.5	44.5
2	Hyola 350TT	Triazine, Hybrid	Early	0.72	97%	26.6	44.7
3	NCH15T103	Triazine, Hybrid	Early - Mid	1.03	140%	21.3	46.0
4	Bonito (Control)	Triazine, Open	Early - Early Mid	0.66	89%	24.1	46.2
5	HyTTec Trophy	Triazine, Hybrid	Early - Mid	0.96	130%	23.2	43.5
6	Hyola 650TT	Triazine, Hybrid	Mid - long season	0.71	96%	24.9	44.3
7	Bonito (Control)	Triazine, Open	Early - Early Mid	0.54	73%	26.9	42.9
8	Hyola 559TT	Triazine, Hybrid	Mid - Mid Early	0.68	92%	26.5	43.9
9	44T02TT	Triazine, Hybrid	Early - Mid	0.75	102%	25.6	43.3
10	Bonito (Control)	Triazine, Open	Early - Early Mid	0.50	68%	25.5	44.5

Yield, Protein and Oil adjusted for moisture - average moisture 6.2 %

Site Mean (t/ha) 0.739
 Probability 0.085
 Least significant difference 5% 0.258
 CV % 6.8



Site Details
 Soil Description: Sandy Loam
 Date Sown: Thursday, 19 April 2018
 Harvested Date: Wednesday, 28 November 2018
 Seeding Rate: 3.0 kg/ha

Plot Dimensions
 Length (m) 200
 Width (m) 12
 Plot Area (ha) 0.240
 Conversion Factor 4.17

Rainfall Data
 Growing Season (mm) 299.3
 Site Yield (t/ha) 0.739
 kg/mm - Rainfall 2.5

RAINFALL 2018 (mm)	January	1.2	
	February	86.6	
	March	22.1	
	April	7	7
	May	19	26
	June	29.3	55.3
	July	30.9	86.2
	August	120.4	206.6
	September	34.4	241
	October	58.3	299.3
	Total	409.2	

Cumulative Growing Season Rainfall

Station: Sparkle Hill



PLATINUM SPONSORS



DIAMOND SPONSORS



Seed Company Sponsors: AGT, Intergrain, Nuseed, SeedNet, DuPont Pioneer, Bayer



Seed Company Sponsors: Quaker Oats, Nuseed, Pacific Seeds, Canola Breeders of WA, Australian Grain Technologies, Heritage Seeds, Adelaide University and Intergrain



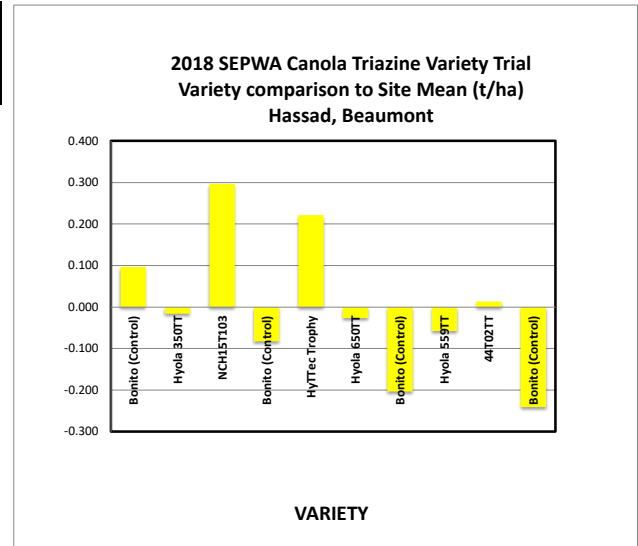
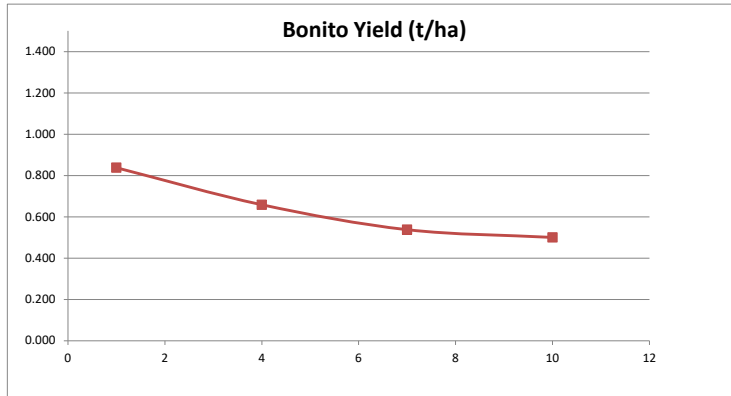
HARVEST DATA - SEPWA - Canola (Triazine) - Hassad, Beaumont

Harvest date - 28th November 2018

Plot	Variety!	Plot Length	Plot Width	Area (ha)	Weight (kgs)	Yield (t/ha)	Plot 2	% of Site Mean
1	Bonito (Control)	200	12	0.24	201	0.838	1	113%
2	Hyola 350TT	200	12	0.24	174	0.725	4	98%
3	NCH15T103	200	12	0.24	249	1.038	9	140%
4	Bonito (Control)	200	12	0.24	158	0.658	16	89%
5	HyTTec Trophy	200	12	0.24	231	0.963	25	130%
6	Hyola 650TT	200	12	0.24	171.5	0.715	36	96%
7	Bonito (Control)	200	12	0.24	129	0.538	49	73%
8	Hyola 559TT	200	12	0.24	164	0.683	64	92%
9	44T02TT	200	12	0.24	181	0.754	81	102%
10	Bonito (Control)	200	12	0.24	120	0.500	100	67%

Average of Yield (t/ha)	
Variety!	Total
Bonito (Control)	0.633
Hyola 559TT	0.683
Hyola 650TT	0.715
Hyola 350TT	0.725
44T02TT	0.754
HyTTec Trophy	0.963
NCH15T103	1.038
Grand Total	0.741

Plot	Variety!	Plot Length	Plot Width	Area (ha)	Weight (kgs)	Yield (t/ha)	Plot 2	% of Site Mean
1	Bonito (Control)	200	12	0.24	201	0.838	1	113%
4	Bonito (Control)	200	12	0.24	158	0.658	16	89%
7	Bonito (Control)	200	12	0.24	129	0.538	49	73%
10	Bonito (Control)	200	12	0.24	120	0.500	100	67%



PLATINUM SPONSORS



DIAMOND SPONSORS



Seed Company Sponsors: AGT, Intergrain, Nuseed, SeedNet, DuPont Pioneer, Bayer