

## HARVEST DATA - SEPWA Barley Variety Trial - P Piggott, Coomalbidgup Harvested - 15th November 2019 Header Comparison

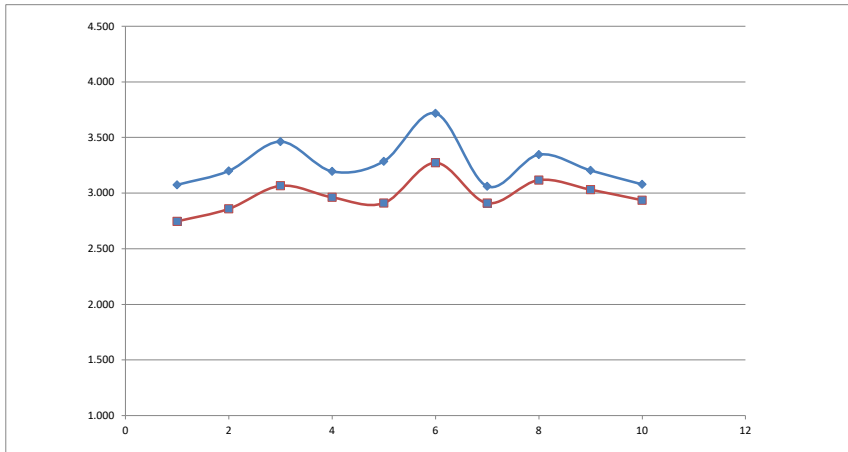
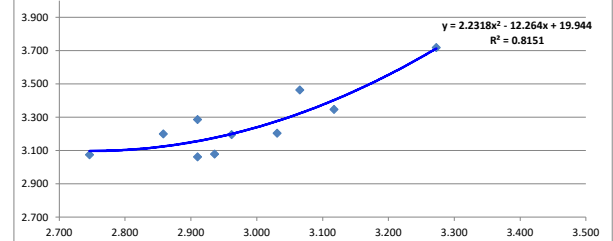


Plot	Variety!	Plot Length	Plot Width	Area (ha)	Weight (kgs)	Yield (t/ha)	% of Site Mean	Header Weight	Header Yield	Header % Site	Plot 2
1	RGT Planet	193	12	0.232	636	2.746	92%	712	3.074	94%	1
2	Spartacus	193	12	0.232	662	2.858	96%	741	3.199	98%	4
3	Rosalind	193	12	0.232	710	3.066	103%	802	3.463	106%	9
4	RGT Planet	193	12	0.232	686	2.962	99%	740	3.195	98%	16
5	Compass	193	12	0.232	674	2.910	98%	761	3.286	101%	25
6	Leabrook WI 4896	193	12	0.232	758	3.273	110%	861	3.718	114%	36
7	RGT Planet	193	12	0.232	674	2.910	98%	709	3.061	94%	49
8	Banks	193	12	0.232	722	3.117	105%	775	3.346	103%	64
9	RGT Planet (SEPWA)	193	12	0.232	702	3.031	102%	742	3.204	98%	81
10	RGT Planet	193	12	0.232	680	2.936	98%	713	3.079	94%	100

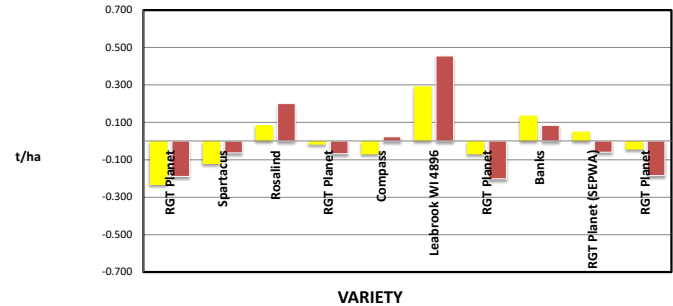
Data		
Variety!	Weigh Yield	Header Yield
Banks	3.117	3.346
Spartacus	2.858	3.199
Rosalind	3.066	3.463
Compass	2.910	3.286
RGT Planet	2.889	3.102
RGT Planet (SEPWA)	3.031	3.204
Leabrook WI 4896	3.273	3.718
Grand Total	2.981	3.263

Plot	Variety!	Plot Length	Plot Width	Area (ha)	Weight (kgs)	Yield (t/ha)	% of Site Mean	Header Weight	Header Yield	Header % Site	Plot 2
1	RGT Planet	193	12	0.232	636	2.746	92%	712	3.074	94%	1
4	RGT Planet	193	12	0.232	686	2.962	99%	740	3.195	98%	16
7	RGT Planet	193	12	0.232	674	2.910	98%	709	3.061	94%	49
10	RGT Planet	193	12	0.232	680	2.936	98%	713	3.079	94%	100

Header Yield compared to Weigh Trailer



2019 SEPWA BARLEY Variety Trial  
Variety comparison to Site Mean (t/ha)  
Pete Piggott, Coomalbidgup



PLATINUM SPONSORS



DIAMOND SPONSORS



Seed Company Sponsors: AGT, Intergrain,  
Nuseed, SeedNet, Pioneer, Bayer

## HARVEST DATA - SEPWA Barley Variety Trial - P Piggott, Coomalbidgup Harvested - 15th November 2019

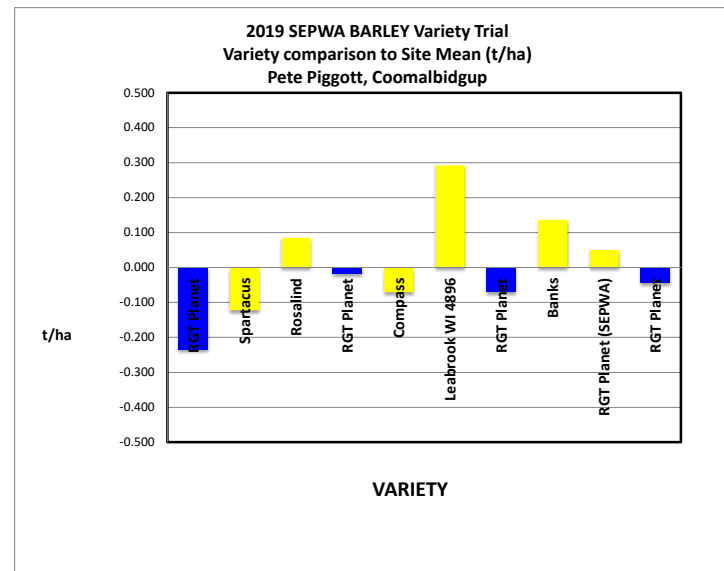
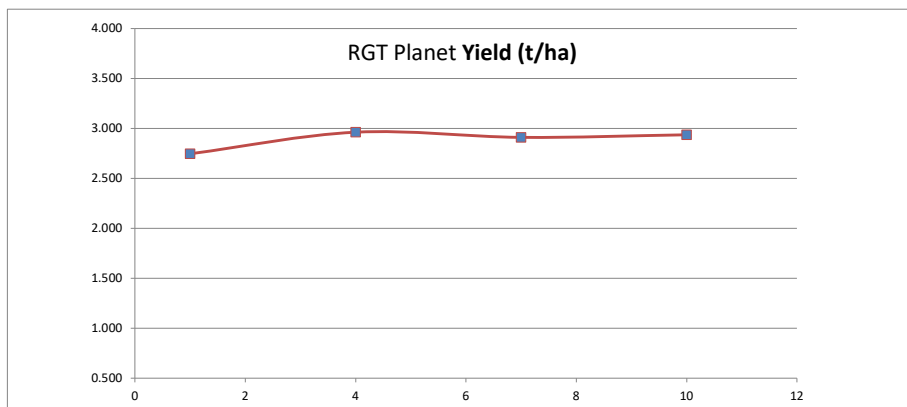


Plot	Variety!	Lodging Score	Plot Length	Plot Width	Area (ha)	Weight (kgs)	Yield (t/ha)	Plot 2	% of Site Mean
1	RGT Planet	7	193	12	0.232	636	2.746	1	92%
2	Spartacus	9	193	12	0.232	662	2.858	4	96%
3	Rosalind	9	193	12	0.232	710	3.066	9	103%
4	RGT Planet	7	193	12	0.232	686	2.962	16	99%
5	Compass	6	193	12	0.232	674	2.910	25	98%
6	Leabrook WI 4896	7	193	12	0.232	758	3.273	36	110%
7	RGT Planet	7	193	12	0.232	674	2.910	49	98%
8	Banks	8	193	12	0.232	722	3.117	64	105%
9	RGT Planet (SEPWA)	7	193	12	0.232	702	3.031	81	102%
10	RGT Planet	7	193	12	0.232	680	2.936	100	98%

Average of Yield (t/ha)	
Variety!	Total
Spartacus	2.858
RGT Planet	2.889
Compass	2.910
RGT Planet (SEPWA)	3.031
Rosalind	3.066
Banks	3.117
Leabrook WI 4896	3.273
Grand Total	2.981

**Lodging Score** — 9 :Erect, 5 : 45 degrees, 1 :Flat on Ground

Plot	Variety!	Plot Length	Plot Width	Area (ha)	Weight (kgs)	Yield (t/ha)	Plot 2	% of Site Mean	
1	RGT Planet	7	193	12	0.232	636	2.746	1	92%
4	RGT Planet	7	193	12	0.232	686	2.962	16	99%
7	RGT Planet	7	193	12	0.232	674	2.910	49	98%
10	RGT Planet	7	193	12	0.232	680	2.936	100	98%



**PLATINUM SPONSORS**

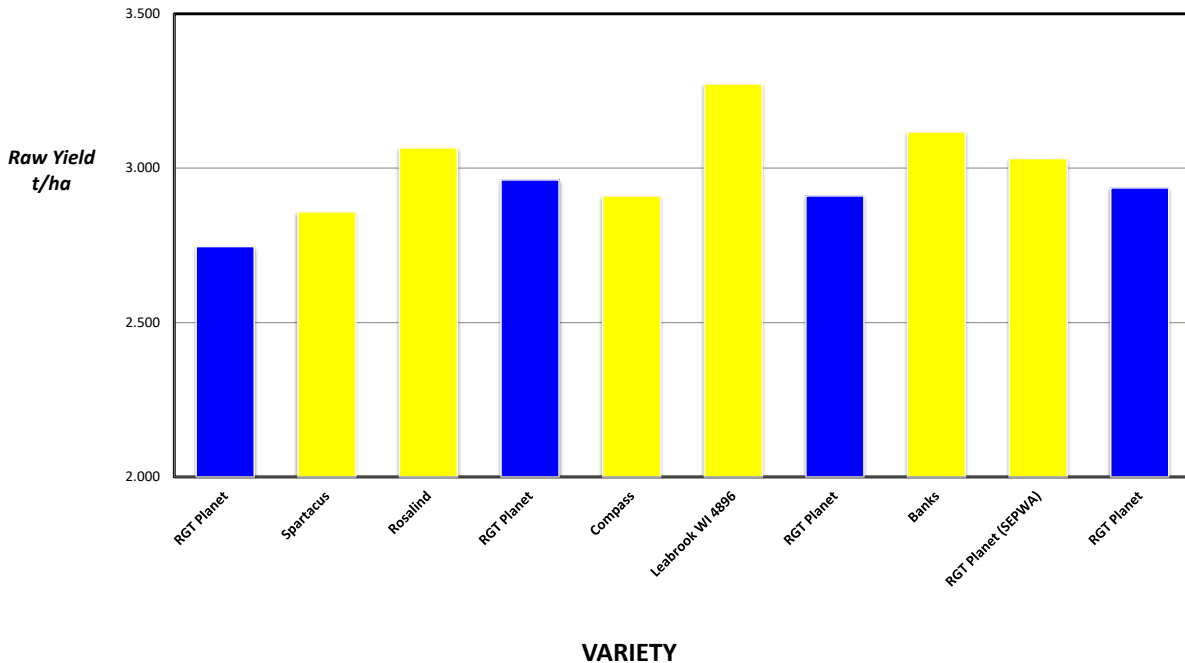


**DIAMOND SPONSORS**



**Seed Company Sponsors: AGT, Intergrain, Nuseed, SeedNet, Pioneer, Bayer**

## 2019 SEPWA BARLEY Variety Trial Pete Piggott, Coomalbidgup



Plot	Variety!	Yield (t/ha)	% of Site Mean
1	RGT Planet	2.746	92%
2	Spartacus	2.858	96%
3	Rosalind	3.066	103%
4	RGT Planet	2.962	99%
5	Compass	2.910	98%
6	Leabrook WI 4896	3.273	110%
7	RGT Planet	2.910	98%
8	Banks	3.117	105%
9	RGT Planet (SEPWA)	3.031	102%
10	RGT Planet	2.936	98%



### Site Details

**Soil Description:** Sand over gravel over clay.  
**Date Sown:** Tuesday, 4 June 2019  
**Date Harvested** Friday, 15 November 2019  
**Seeding Rate:** 70 kg/ha

### Statistical Analysis

**Site Mean (t/ha)** 2.981  
**Probability** 0.202  
**Least significant difference 5%** 0.3463  
**CV %** 3.3

### Plot Dimensions

**Length (m)** 193      **Width (m)** 12      **Area (m2)** 0.232      **Conversion Factor** 4.318



### PLATINUM SPONSORS

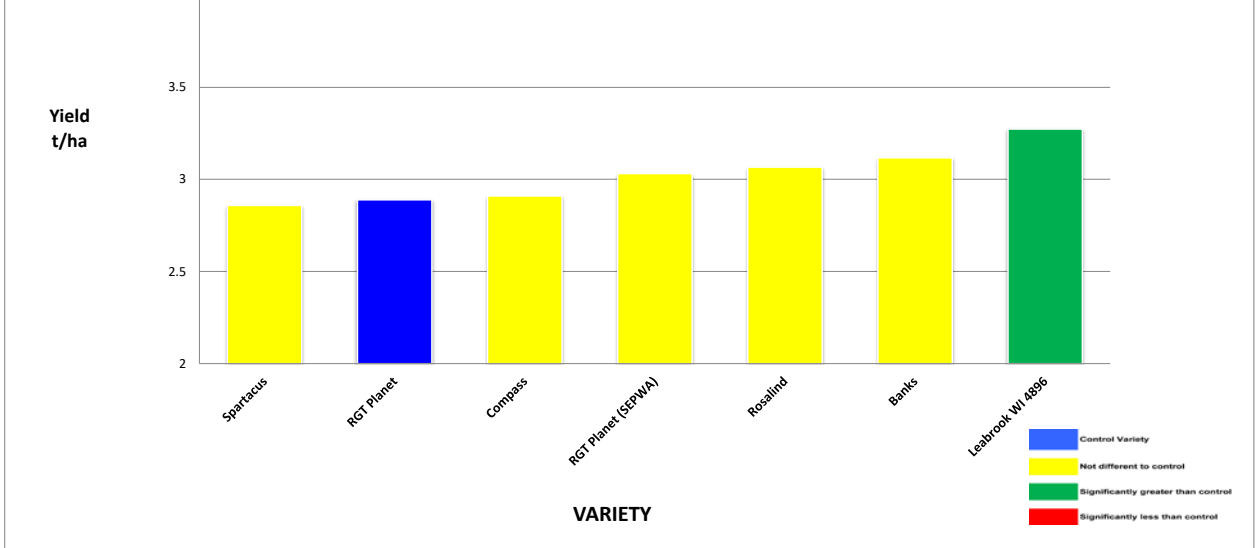


### DIAMOND SPONSORS



**Seed Company Sponsors: AGT, Intergrain, Nuseed, SeedNet, Pioneer, Bayer**

## 2019 SEPWA BARLEY Variety Trial P Piggott, Coomalbidgup



Variety	Maturity	Lodging Score	Yield (t/ha)	% of RGT Planet	Protein %	Colour	Hect kg/hl	Screenings %	Grade
Spartacus	Early Season	9	2.858	99%	10.3	58	65	8.6	Malt1
RGT Planet	Mid-season	7	2.889	100%	9.4	58	63	7.8	BFED1
Compass	Mid-season	6	2.910	101%	9.4	58	61	5.7	BFED1
Rosalind	Mid-season	9	3.066	106%	9.9	57	63	8.6	BFED1
Banks	Mid-late maturing	8	3.117	108%	9.6	58	63	7.9	BFED1
Leabrook ***	Mid-season	7	3.273	113%	9.2	57	61	4.8	BFED1

Lodging Score — 9 :Erect, 5 : 45 degrees, 1 :Flat on Ground

\*\*\* denotes under Malt evaluation

Site Mean (t/ha) 2.981  
 Probability 0.202  
 Least significant difference 5% 0.3463  
 CV % 3.3

### Site Details

Soil Description: Sand over gravel over clay.  
 Date Sown: Tuesday, 4 June 2019  
 Date Harvested: Friday, 15 November 2019  
 Seeding Rate: 70 kg/ha

### Plot Dimensions

Length (m) 193  
 Width (m) 12  
 Plot Area (ha) 0.23  
 Conversion Factor 4.32

### Rainfall Data

Growing Season (mm) 291.8  
 Site Yield (t/ha) 2.981  
 kg/mm - Rainfall 10.22

Month	Rainfall (mm)	Cumulative Growing Season Rainfall
January	3.2	291.8
February	2.6	
March	14.2	
April	29.8	
May	52.4	
June	49.9	
July	22.8	
August	84.7	
September	32.6	
October	19.6	
November	19.4	
<b>Total</b>	<b>331.2</b>	

Station: Pleasant Valley



### PLATINUM SPONSORS



### DIAMOND SPONSORS



Seed Company Sponsors: AGT, Intergrain, Nuseed, SeedNet, Pioneer, Bayer