

HARVEST DATA - SEPWA - Roundup Ready Canola - Mic Fels, Wittenoom Hills

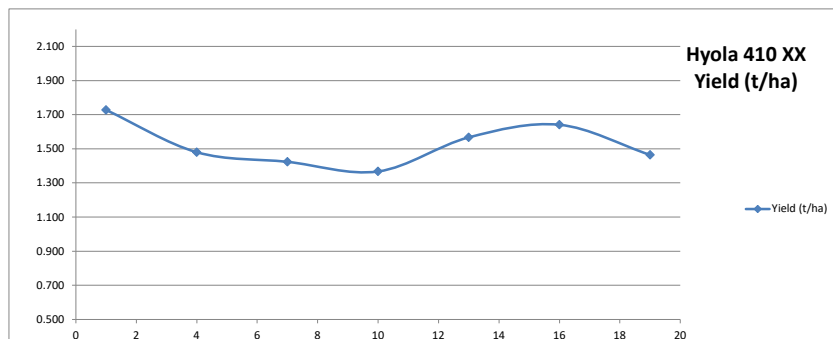
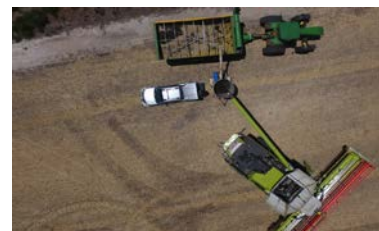
Harvest date - 4th November 2019



Plot	Variety!	Plot Length	Plot Width	Area (ha)	Weight (kgs)	Yield (t/ha)	Plot 2	% of Site Mean
1	Hyola 410 XX	192	12	0.23	398	1.727	1	113%
2	43Y29 RR	192	12	0.23	372	1.615	4	105%
3	44Y27 RR	192	12	0.23	356	1.545	9	101%
4	Hyola 410 XX	192	12	0.23	341	1.480	16	97%
5	45Y25 RR	192	12	0.23	395	1.714	25	112%
6	Hyola 404 RR	192	12	0.23	320	1.389	36	91%
7	Hyola 410 XX	192	12	0.23	328	1.424	49	93%
8	Hyola 506 RR	192	12	0.23	396	1.719	64	112%
9	Hyola 410 XX (0.7 kg Seed)	192	12	0.23	354	1.536	81	100%
10	Hyola 410 XX	192	12	0.23	315	1.367	100	89%
11	Xseed Raptor	192	12	0.23	369	1.602	121	104%
12	DG 408 RR	192	12	0.23	328	1.424	144	93%
13	Hyola 410 XX	192	12	0.23	361	1.567	169	102%
14	Hyola 410 XX (35 kg Fert)	192	12	0.23	302	1.311	196	86%
15	Hyola 410 XX (120 kg Fert)	192	12	0.23	345	1.497	225	98%
16	Hyola 410 XX	192	12	0.23	378	1.641	256	107%
17	Hyola 410XX and GT 50 Mix	192	12	0.23	371	1.610	289	105%
18	GT 50	192	12	0.23	343	1.489	324	97%
19	Hyola 410 XX	177	12	0.21	311	1.464	361	96%

Average of Yield (t/ha)	
Variety!	Total
Hyola 410 XX (35 kg Fert)	1.311
Hyola 404 RR	1.389
DG 408 RR	1.424
GT 50	1.489
Hyola 410 XX (120 kg Fert)	1.497
Hyola 410 XX	1.524
Hyola 410 XX (0.7 kg Seed)	1.536
44Y27 RR	1.545
Xseed Raptor	1.602
Hyola 410XX and GT 50 Mix	1.610
43Y29 RR	1.615
45Y25 RR	1.714
Hyola 506 RR	1.719
Grand Total	1.533

Plot	Variety!	Plot Length	Plot Width	Area (ha)	Weight (kgs)	Yield (t/ha)	Plot 2	% of Site Mean
1	Hyola 410 XX	192	12	0.23	398	1.727	1	113%
4	Hyola 410 XX	192	12	0.23	341	1.480	16	97%
7	Hyola 410 XX	192	12	0.23	328	1.424	49	93%
10	Hyola 410 XX	192	12	0.23	315	1.367	100	89%
13	Hyola 410 XX	192	12	0.23	361	1.567	169	102%
16	Hyola 410 XX	192	12	0.23	378	1.641	256	107%
19	Hyola 410 XX	177	12	0.21	311	1.464	361	96%



PLATINUM SPONSORS

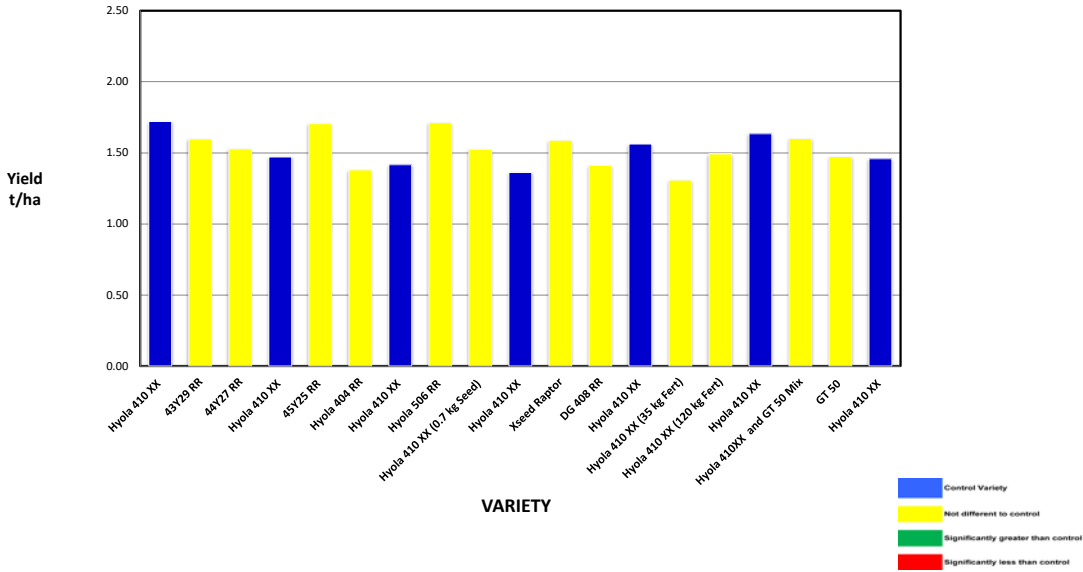


DIAMOND SPONSORS



Seed Company Sponsors: AGT, Intergrain, Nuseed, SeedNet, Pioneer, Bayer

2019 SEPWA Canola Variety Trial
Roundup Ready
 Mic Fels, Wittenoom Hills



Plot	Variety	Triat	Maturity	Yield (t/ha) (adj moisture)	% of Site Mean	Protein %	Oil %
1	Hyola 410 XX	RR Hybrid	Mid - Early	1.72	112%	21.6	48.1
2	43Y29 RR	RR Hybrid	early season	1.60	104%	19.6	46.9
3	44Y27 RR	RR Hybrid	early-mid season	1.53	100%	20.2	47.2
4	Hyola 410 XX	RR Hybrid	Mid - Early	1.47	96%	21.5	47.1
5	45Y25 RR	RR Hybrid	Mid - season	1.71	111%	22.2	47.6
6	Hyola 404 RR	RR Hybrid	Early	1.38	90%	21.9	47.8
7	Hyola 410 XX	RR Hybrid	Mid - Early	1.42	93%	21.2	47.9
8	Hyola 506 RR	RR Hybrid	mid-season	1.71	112%	21.2	47.8
9	Hyola 410 XX (0.7 kg Seed)	RR Hybrid	Mid - Early	1.53	100%	23.8	45.9
10	Hyola 410 XX	RR Hybrid	Mid - Early	1.36	89%	21.0	48.8
11	Xseed Raptor	RR Hybrid	early-mid-maturing	1.59	104%	19.3	48.9
12	DG 408 RR	RT Hybrid	early-mid maturing	1.41	92%	21.0	47.3
13	Hyola 410 XX	RR Hybrid	Mid - Early	1.56	102%	23.9	47.4
14	Hyola 410 XX (35 kg Fert)	RR Hybrid	Mid - Early	1.31	85%	21.3	48.3
15	Hyola 410 XX (120 kg Fert)	RR Hybrid	Mid - Early	1.49	98%	20.5	49.3
16	Hyola 410 XX	RR Hybrid	Mid - Early	1.63	107%	21.6	48.3
17	Hyola 410XX and GT 50 Mix	RR Hybrid	Mid - Early	1.60	105%	22.8	46.6
18	GT 50	RR Hybrid	Mid - Early	1.47	96%	22.0	45.4
19	Hyola 410 XX	RR Hybrid	Mid - Early	1.46	95%	21.8	47.9

Yield, Protein and Oil adjusted for moisture - average moisture 6.6%

Site Mean (t/ha) 1.523
 Probability 0.612
 Least significant difference 5% 0.3327
 CV % 8.3

Site Details

Soil Description: Clay Loam, OC 1.5, pH 4.9 (increases at depth).
 Date Sown: 43588
 Harvested Date: 43773
 Seeding Rate: 2.4 kg/ha

Plot Dimensions

Length (m) 192
 Width (m) 12
 Plot Area (ha) 0.230
 Conversion Factor 4.34

Rainfall Data

Growing Season (mm) 147.8
 Site Yield (t/ha) 1.523
 kg/mm - Rainfall 10.3

RAINFALL 2019 (mm)	Month	mm	Cumulative Growing Season Rainfall
	January	2.6	
	February	1.6	
	March	36.4	
	April	11	
	May	18.8	
	June	14.8	147.8
	July	9	
	August	62.4	
	September	10	
	October	21.8	
	November	4	
	Total	192.4	

Station: DPIRD Weather Station Mount Burdett 1



PLATINUM SPONSORS



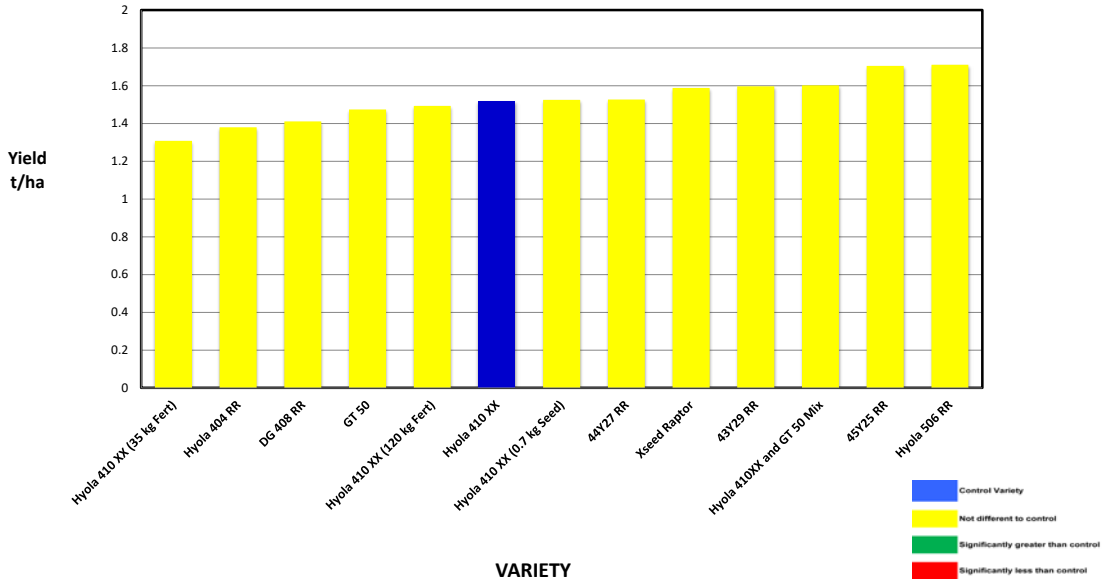
DIAMOND SPONSORS



Seed Company Sponsors: AGT, Intergrain, Nuseed, SeedNet, Pioneer, Bayer

Seed Company Sponsors: Quaker Oats, Nuseed, Pacific Seeds, Canola Breeders of WA, Australian Grain Technologies, Heritage Seeds, Adelaide University and Intergrain

**2019 SEPWA Canola Variety Trial
Roundup Ready
Mic Fels, Wittenoom Hills**



Variety	Triat	Maturity	Yield (t/ha)	% of Hyola 410 XX	Protein %	Oil %
Hyola 410 XX (35 kg Fert)	RR Hybrid	Mid - Early	1.308	86%	21.3	48.3
Hyola 404 RR	RR Hybrid	Early	1.38	91%	21.9	47.8
DG 408 RR	RT Hybrid	early-mid maturing	1.411	93%	21.0	47.3
GT 50	RR Hybrid	Mid - Early	1.474	97%	22.0	45.4
Hyola 410 XX (120 kg Fert)	RR Hybrid	Mid - Early	1.493	98%	20.5	49.3
Hyola 410 XX	RR Hybrid	Mid - Early	1.517	100%	21.6	48.1
Hyola 410 XX (0.7 kg Seed)	RR Hybrid	Mid - Early	1.525	101%	23.8	45.9
44Y27 RR	RR Hybrid	early-mid season	1.527	101%	20.2	47.2
Xseed Raptor	RR Hybrid	early-mid-maturing	1.588	105%	19.3	48.9
43Y29 RR	RR Hybrid	early season	1.597	105%	19.6	46.9
Hyola 410XX and GT 50 Mix	RR Hybrid	Mid - Early	1.602	106%	22.8	46.6
45Y25 RR	RR Hybrid	Mid - season	1.705	112%	22.2	47.6
Hyola 506 RR	RR Hybrid	mid-season	1.711	113%	21.2	47.8

Yield, Protein and Oil adjusted for moisture - average moisture 6.6%

Site Mean (t/ha) 1.523
Probability 0.612
Least significant difference 5% 0.3327
CV % 8.3

Site Details

Soil Description: Clay Loam, OC 1.5, pH 4.9 (increases at depth).
Date Sown: Friday, 3 May 2019
Harvest Date: Monday, 4 November 2019
Seeding Rate: 2.4 kg/ha

Plot Dimensions

Length (m) 192
Width (m) 12
Plot Area (ha) 0.2304
Conversion Factor 4.34

Rainfall Data

Growing Season (mm) 147.8
Site Yield (t/ha) 1.523
kg/mm - Rainfall 10.30

RAINFALL 2019 (mm)	January	2.6	147.8	Cumulative Growing Season Rainfall
	February	1.6		
	March	36.4		
	April	11		
	May	18.8		
	June	14.8		
	July	9		
	August	62.4		
	September	10		
	October	21.8		
	November	4		
	Total	192.4		

Station: DPIRD Weather Station Mount Burdett 1



PLATINUM SPONSORS



DIAMOND SPONSORS



Seed Company Sponsors: AGT, Intergrain, Nuseed, SeedNet, Pioneer, Bayer